

FISHING REPORT NUMBER 7

6/3/2010



INLAND REPORT

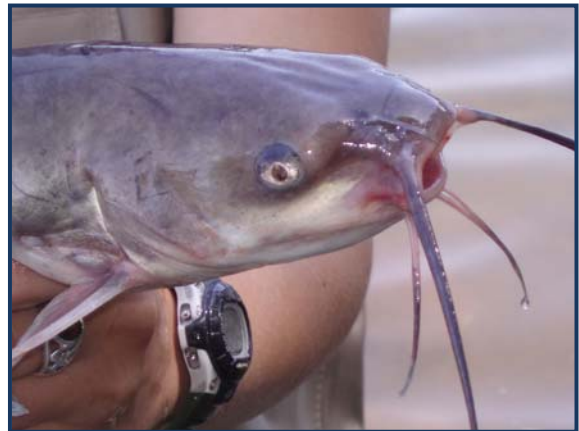
Come take a tour of the Rainbow Fishway-

See migrating fish in the underground viewing window.

This Saturday –DEP’s annual OPEN HOUSE AT THE RAINBOW FISHWAY is Saturday, June 5, from 10:00 am until 3:00 pm. The public is invited to visit the fishway and learn about both it and the fish it passes. During this day, the public can tour the facility and are encouraged to go downstairs and check out the underground viewing window. Shad and lamprey may be seen passing upstream, and Atlantic salmon are sometimes captured for breeding. Staff will be on hand to answer questions. This is a **GREAT ACTIVITY FOR FAMILIES**, and there is no fee. *Directions can be found at the end of the Inland Report section.*

CHANNEL CATFISH – DEP conducted its annual catfish stocking this week. A total of **5,200 adult catfish** (14-18 inch fish averaging 2 lbs apiece) and **9,900 yearling catfish** (9-12 inch fish) were stocked into 13 water bodies scattered throughout the state.

The adult catfish were released into five of the Urban fishing Areas, Lakewood Lake (Waterbury)- 1,250 fish, Bunnells Pond (Bridgeport) – 1,500 fish, Keney Park Pond (Hartford) -500 fish, Lake Wintergreen (Hamden/New Haven) -1,200 fish, and Mohegan Park Pond (Spaulding Pond, Norwich) -750 fish. The yearling catfish stocked into Black Pond (Middlefield) -300 fish, Maltby Lakes 2 & 3 (Orange/West Haven) -700 fish, Lower Bolton Lake (Bolton) -2,800 fish, Pataconk Lake (Chester) -800 fish, Quonnipaug Lake (Guilford) -1,250 fish, Silver Lake (Meriden) -2,400 fish and Lake Wintergreen – 750 fish.



One of the more than 15,000 channel catfish stocked this week. These fish were released into 13 water bodies throughout the state.

TROUT

Rivers & streams - Anglers can expect good trout fishing. Although DEP’s spring stocking program was completed last week there’s still plenty of trout waiting to be caught and flows (especially in eastern CT) have been enhanced by recent thunderstorms and showers. As the possibility of some scattered showers and thunderstorms remain in the forecast through the weekend, anglers may expect stream flows to vary throughout the state. Some success is being found using worms & corn/mealworm combinations. A number of major insect hatches are underway (hatch times will vary with water temperatures).

Good reports from the West Branch Farmington River, Housatonic River, Blackberry River, Saugatuck River TMA, Fenton River, Mt. Hope River, Natchaug River, Still River (Eastford), Naugatuck River Salmon River, Blackledge River, Norwalk River and Quinebaug River. The “*big fish*” of the week was a 9.25 lb rainbow trout and there was a two way tie for the “*big stick*” of the week with 30 fish coming to the net.

Farmington River – Fishing continues to be good. West Branch flows remain clear and moderate, currently 315 cfs at Riverton plus an additional 40 cfs from the Still River. Water temperatures are in the mid 50’s °F.

Hatches on the Farmington include *Viterus* [a.k.a. pale evening dun] #14, Tan Caddis (#16-18), Emerald Caddis (#14), Blue Wing Olive [a.k.a. baetis or vegans] #16-24, a few Hendrickson [a.k.a. red quills] #12-16 can be found above Riverton. Some Sulphurs are being found in the Collinsville/Unionville area. Blue Quill [a.k.a. paralep] #18 and the Quill Gordon (#14), March Brown nymphs (#12-14), Gray Fox (#14, afternoon), Blue Wing Olives (#16-20, mid-late afternoon), Caddis (tan #14-18, all day; green #16-20, evening), Midges (#22-32) and Pale Evening Duns (*Epeorus vitreus* #14-16, afternoon & early evenings) are the current working patterns.

Housatonic River – Trout fishing is very good and conditions continue to be good for fishing. Flows are currently moderate and very fishable, 630 cfs at Falls Village and 970 cfs at Gaylordsville. Water temperatures are in the mid-upper 60's °F.

Major insect hatches are here and will begin to provide excellent fly fishing especially when the spinners start up. Current patterns include Sulphurs (#14-16), *Isonychia* (#10-12), Blue Wing Olive (#18-24, early morning; spinner fall in evening), Cahill (#12-14), Adams (#12-20, evening), March Brown (#10-12) & Gray Foxes (#10-12) are producing. Green Caddis (#14-20, early morning & evening) are on the water. Midges and early stoneflies (#6) are also being seen at tributary mouths.

Lakes & Ponds- It's big fish time! Lots of big trout tend to be caught from late May into mid June.

Connecticut anglers enjoyed some really good fishing during the Memorial Day weekend, with reports from Candlewood Lake (very good- 22 trout including a 5- lb brown and several additional 18-20 inch fish), Highland Lake, Mohawk Pond, East Twin Lake (very good), Mt. Tom Pond, West Hill Pond, Wonoskopomuc Lake, Lake McDonough, Lake Saltonstall, Ball Pond, Beach Pond, Crystal Lake, Long Pond, Mashapaug Lake, Bigelow Pond, Black Pond (Middlefield), Gardner Lake, Hamilton Reservoir, Lake Hayward, Colebrook Reservoir, Quonnipaug Lake and Stillwater Pond.

Trout Parks – Spring stockings are finished, but there's still plenty of trout awaiting anglers at the eleven designated Trout Parks. East of the CT River are the Valley Falls Park Pond, Mohegan Park Pond, Day Pond and Natchaug River Trout Parks, and west of the river, Southford Falls, Stratton Brook, Kent Falls, Wolfe Park (Great Hollow Pond), Wharton Brook and Sleeping Giant (Mill River-Hamden) Trout Parks.

LARGEMOUTH BASS fishing is reported as fair to very good. The best reports are from Lake Wonoskopomuc, East Twin Lake, Amos Lake, Bashan Lake, Candlewood Lake, Quaddick Lake (including a 5.5 lb largemouth), Lake Saltonstall, Bantam Lake (a number of 4-5 lb bass among the catches) and Aspinoak Pond (nights are still a bit slow) and fair reports from Lake McDonough, Highland Lake, Lake Lillinonah, Gardner Lake, Rainbow Reservoir, Coventry Lake (catches include a 5.25 lb bass) and Batterson Park Pond. Fishing at Lake Housatonic, Glasgo Pond and Red Cedar Lake was on the tough side. Additional places to try include Ball Pond, Moodus Reservoir, Pickerel Lake, Beseck Lake, Highland Lake, Quonnipaug Lake, Bishop Swamp Pond, Halls Pond, Mudge Pond, Indian Lake, Pachaug Pond and Hopeville Pond. The "big stick" of the week caught 20 fish and the "whopper" weighed in at 6.25 lbs.

SMALLMOUTH BASS action reported from Candlewood Lake (remains excellent), Coventry Lake (fair), Lake Lillinonah (fair), Mashapaug Lake (fair), Lake McDonough (fair), Highland Lake (difficult), Colebrook Reservoir, Gardner Lake (tough), Bashan Lake, Wyassup Lake and Squantz Pond (good).

NORTHERN PIKE fishing is reported to be good in Pachaug Pond, Bantam Lake and Winchester Lake. Some 14-16" **KOKANEE** are being caught. Try fishing at East Twin Lake or West Hill Pond at 3 colors of lead line. These fish are famous for their exciting aerial displays.

WALLEYE action reported from Squantz Pond, Coventry Lake and Lake Saltonstall.

PANFISH - With the early summer, these tasty fish show up in big numbers. Fish the shallows and don't forget to try your small local ponds, these often have the best action. Use worms, grubs and any type of

inexpensive fishing pole or drop line and give these easy to catch fish a go. The kids love this non-stop action and it will keep them occupied for hours.

CONNECTICUT RIVER – Flows continue to be lower than is typical for spring. **STRIPED BASS** remain throughout the river. Memorial Day weekend action kept many anglers busy. Surface poppers are providing some exciting action under clear water conditions while trolling tube & worm and casting soft plastics work best in stained water. Get out there now as these fish are starting to move out to the reefs. **SHAD** can still be found throughout the river, but the action has slowed. **NORTHERN PIKE** are reported in the coves and in slow areas along the mainstem from Hartford to Haddam (mostly smaller fish). **CATFISH** are being taken in the mid to lower river area on chunk bait. Coves are good places to try for cats right now. **LARGEMOUTH BASS** (lower river) and **SMALLMOUTH BASS** (upper river especially) fishing has been good, with several 3-4 lb largemouth and some 3-lb smallies among the bags.

A REMINDER TO CONNECTICUT RIVER ANGLERS: Wild adult salmon are now returning to the Connecticut River system and may be accidentally caught by shad or striper anglers. We remind all that it is illegal to fish for or take Atlantic salmon in Connecticut. The only exceptions to this prohibition are those specific areas stocked with surplus broodstock Atlantic salmon, waters and designated as open to salmon fishing (see the 2010 CT Angler's guide for regulations and locations).

Anglers should be aware that roughly handled and photographed salmon can die before they can be captured for breeding at upstream fishways. We encourage all anglers who catch a salmon to never remove it from the water (photograph it at the surface) and to release it as quickly as possible. If you must leave tackle in its mouth, contact DEP's Diadromous Fisheries Program (860-447-4316) and we will return the tackle if it is still present when the salmon is captured.

NOTES & NOTICES:

- Portions of **BANTAM LAKE** are currently scheduled to be treated with an aquatic herbicide on Wednesday, June 16, 2010. During the day of treatment, the entire lake (including all boat launches) will be closed.
- **GLASGO POND** has been varying levels of drawdown to facilitate ongoing dam repairs and inspections. The pond is currently down 2.5 feet and the state boat launch is usable, although extra care should be taken when launching (especially larger boats). Some refilling is expected to begin later this week.
- The Valley Forge Road bridge crossing of the **Saugatuck River at Devil's Glen** will be closed for repairs. The section of the Saugatuck River from Saugatuck Reservoir Dam down to Davis Hill Road was not stocked this year.
- The Butts Bridge Road bridge over the **Quinebaug River/Aspinook Pond** is currently closed for road reconstruction. The state water access area on Butts Bridge Road is open to public use, but can be accessed by vehicle from the east only.

Directions to Rainbow Reservoir Fishway:

From Rt. I-91, take exit 40 to Rt.20 (Bradley Airport Exit). Travel west to the Hamilton South exit. At the end of the exit ramp turn left. Turn right at the first intersection on to Rainbow Road. The fishway is on the left about a quarter of a mile down the road. Look for a cyclone fence and a brown sign with yellow lettering.

From Rt.20 East (traveling toward I-91), go past the exit for Bradley Airport and take the Hamilton exit. At the end of the exit ramp turn right. Turn right at the first intersection on to Rainbow Road. The fishway is on the left about a quarter of a mile down the road. Look for a cyclone fence and a brown sign with yellow lettering.

MARINE FISHING REPORT



Surface water temperatures in Long Island Sound (LIS) are in high 50's ° F to about 60 ° F. Check out the following web sites for more detailed water temperatures and marine boating conditions:

<http://www.mysound.uconn.edu/stationstat.html>

http://marine.rutgers.edu/mrs/sat_data/?nothumbs=1

<http://www.ndbc.noaa.gov/>

<http://www.wunderground.com/MAR/AN/330.html>

STRIPED BASS fishing on the major reefs with live menhaden (bunker) or eels have been producing some nice striper in the 40+ inch range. Dawn and dusk are the times to be wetting a line. Striper spots include the Watch Hill area, the Race, Bartlett Reef, Plum Gut, Long Sand Shoal, Southwest Reef, Sixmile Reef, the reefs off Branford, Stratford Shoal/Middle Ground, Penfield Reef, Norwalk Islands, Cable and Anchor Reef, and the Cows off Stamford. Schoolie action has slowed down in the tidal rivers but is still worth trying especially early in the morning.

BLUEFISH fishing action is steadily improving. Bluefish are throughout LIS and the lower tidal rivers. Chopper locations include the Race, Millstone power plant discharge, Plum Gut, Long Sand Shoal, Southwest Reef, Sixmile Reef, Reefs off Guilford to Branford, Sandy Point (New Haven Harbor), Penfield Reef, Stratford Shoal/Middle Ground, and the Norwalk Islands.

SUMMER FLOUNDER (fluke) fishing is fair to good although you may have to go through a lot of sublegal fish in order to find a keeper. Fluke spots include the Stonington area, Great and Little Peconic Bays, Gardiners Bay, and the north shore of Long Island including Horton Point, Herod Point, off Port Jefferson, and Eatons Neck. Other spots include the south side of Fishers Island, the "Bloody Grounds" off Niantic, White Sands Beach, Long Sand Shoal, Falkner Island area, and off the New Haven breakwaters.

SCUP (porgy) fishing is fair to good on the local reefs. Scup in the 15 inch range have been reported already this year!

BLACK SEA BASS have been taken off the North shore of Long Island in the Mattituck area to Port Jefferson.

For regulation updates and fishing/crabbing information, please check out our web site at: www.ct.gov/dep or pick up the new 2010 Angler's Guide.



DEP WEEKLY FISHING REPORT
CONNECTICUT DEPARTMENT OF ENVIRONMENTAL PROTECTION
79 Elm Street, Hartford, CT 06106
www.ct.gov/dep